

# TURNING THE DBS GENERATOR OFF

This is a guide for turning the DBS generator OFF or ON. If you have any questions about these steps, contact Medtronic Neurological Technical Services at 1-800-328-0810 (available 24 hours a day, seven days a week).

## 1. Determine if the patient has a **Solettra** or **Kinetra** type of generator(s) implanted.

Every DBS patient either has one or two **Solettra** generators or one **Kinetra** generator implanted. In general, the generators are placed underneath the skin of the chest wall. Each **Solettra** device has its own battery and both are usually located on each side of the chest. The **Kinetra** is typically implanted on the right side of the chest. However, some occasionally may be implanted underneath the skin of the abdomen.

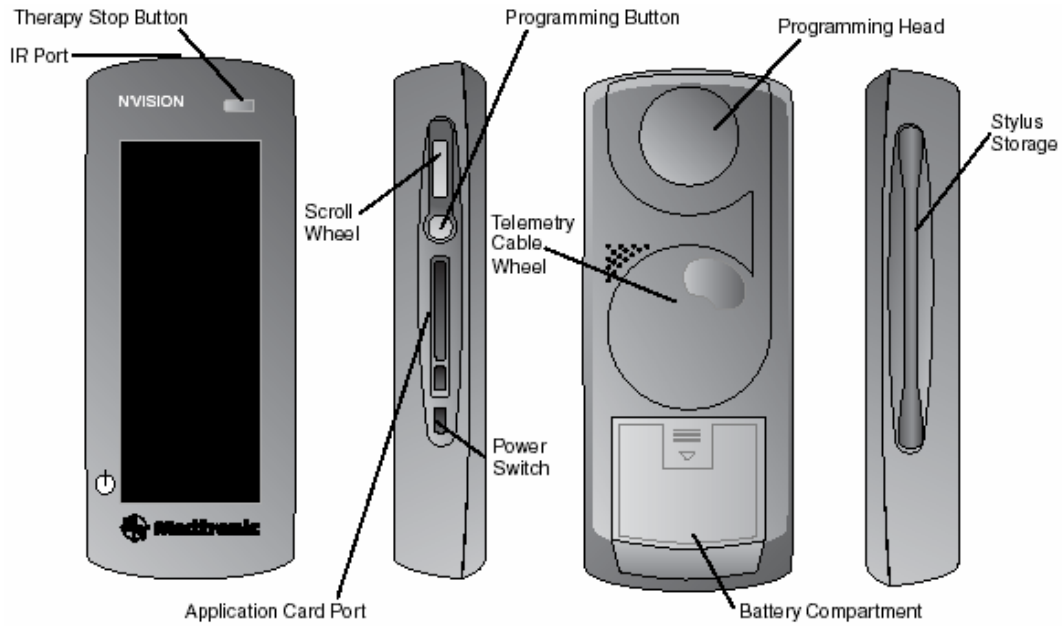
With the **Solettra generators**, each side needs to be turned OFF individually (i.e., if a patient is having difficulty with the right side of body such as excessive movements, cramping, discomfort, then turn OFF the left generator, and vice versa). The left generator controls the right side of the body and the right generator controls the left side of the body.

The **Kinetra generator** controls **both** the left and right sides of the body; thus, if the device is turned OFF both sides of the body are affected, as with turning it ON. If you want one side ON you need to keep the generator ON, and program the voltage individually for the left and right brain (turn OFF one side by turning the voltage down to 0.0 volts).

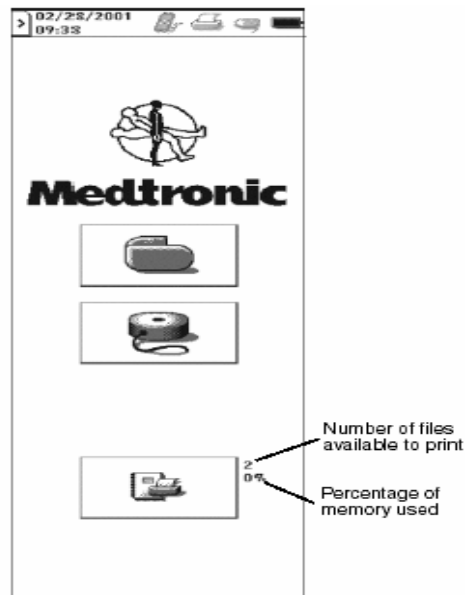
## 2. Turning the Generator ON and OFF:

With the Medtronic N'Vision programmer (a blue handheld device) interrogate the generator site by following the directions below.

A) On the left hand side of the programmer, there is an ON/OFF button (it is the button on the lower part of the side closest to you when you are holding the device). Slide the button down to turn the programmer ON.



B) The first screen that appears has three pictures (options): you will choose the first picture, which looks like a generator, or DBS battery.



C) Tap the “Position programming head over INS” button (see figure below).

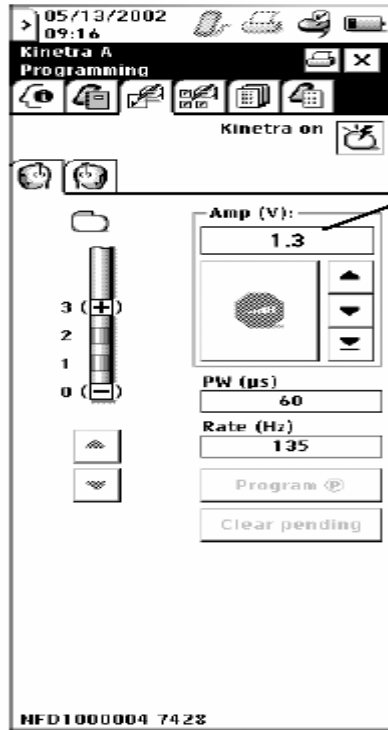


D) Align the programming head, or round detachable piece (located on the back of the programmer) with the generator site on the patient.

E) You will know if it is registering, or working, when a green light flashes. If a yellow light flashes, you need to reposition the programming head.

F) It is best to write down the settings immediately upon interrogation so you do not forget the settings when you need to turn it back ON. Always include the electrode settings (i.e., Case +, 1-, 2- and so forth), voltage, pulse width, and pulse rate.

G) Once you have connected the handheld device to the DBS generator, **decrease the voltage to 0.0 volts and turn the device OFF.** Remember that each side needs to be set to 0.0 volts and turned OFF individually with the Soletra model. With the single generator Kinetra model, both the left and right brain need to be set at 0.0 volts and turned OFF.



Using the stylus, select the Amplitude input box. A list of selectable amplitudes will appear. Choose the desired amplitude value. (Alternative methods for programming are presented beginning on page 3-31)

When you are ready to turn the generators ON, you may reset the parameters back to the initial settings. To reset a parameter, tap in the box to turn the Amp (voltage) on. Tap the arrow up to the exact setting.

**If you have any questions about these steps, contact:**

**Medtronic Neurological Technical Services at:  
1-800-328-0810 (24 hours a day, 7 days a week).**